



# THE ADVISOR

Volume 30 Number 3

www.nagleepark.org

December 2003

## Top Dog in Naglee Park

By Wendy Allen

Top Dog, a well-known, gourmet hot dog establishment, has arrived in Naglee Park. Paul Wedel, Naglee Park resident and past owner of Top Dog restaurants in Berkeley and Oakland, has opened his latest shop next to the 7-11 on the corner of 11th and San Carlos streets.

The restaurant is scheduled to open in early December with eat-in, take-out, and catering for large and small events. The menu will initially mirror that of the Berkeley shop, but may be tweaked depending on local demand. Offerings include the signature New York, kosher-style frankfurter, German wursts, Italian sausage, linguica, turkey dogs with cilantro and peppers, and a vegetarian dog. Other delicious menu items include cheesecake by Charlie's Cheesecake Works, Will's potato salad, chips and soft drinks.

Paul is considering applying for an alcohol license, so it may be possible to enjoy a beer or glass of wine along with a meal in the outdoor garden area. The interior of the restaurant has been tastefully redecorated with fresh paint, Corian countertops and a beautiful Moroccan-style decorative artwork by Naglee Park resident Ted Fullwood. The five-foot Wolf griddle and tile floor remain from the previous owner.

continued on page 5



photo by Ralph Dias © 2003

## Bark in the Park 2003 A Howling Success

By Ken Podgorsek, Chair Bark 2003

Bark in the Park 2003 lived up to its reputation as the premier event for dog lovers and their best friends. We had over 3000 dogs and over 9000 humans. All guests had a fun time. There was great entertainment, great food, and a great selection of dog-oriented vendors.

Bark in the Park continues being a favorite of the dog lover community. Bark in the Park is consistently rated the number one dog-oriented event in Northern California. The Bark committee is very proud of our reputation and we owe reputation to our volunteers and our neighbors. Bark in the Park brings many

people into Naglee Park who would not normally visit. Our guests learn what we already know: Naglee Park is the best neighborhood in San Jose because we work hard to make it that way.



photo by Beth Martin © 2003

Bark in the Park is the largest contributor to our beautification efforts in Naglee Park. Bark 2003 also continued the tradition of picking a local pet-oriented charity as a benefactor, again selecting the Humane Society Silicon Valley. We are very proud of our growing relationship with the Humane Society. They love Bark and we really appreciate all that they to help promote the event. Bark Funds were also been used to help the Selma Olinder School PTA build a science garden to enhance science education. More recently Bark funds were used as a matching grant for

continued on page 11

# THE ADVISOR

Campus Community Association

P.O. Box 90038, San Jose, CA 95109-3038

ccaadvisor@nagleepark.org www.nagleepark.org (408)293 1602

The Advisor is the quarterly newsletter of the Campus Community Association. CCA's goal is to promote neighborhood spirit and improve the quality of life within the Campus Community through education and community projects.

## Officers

President	David Erickson
Vice President	Beth Shafran-Mukai
Treasurer	Ken Podgorsek
Secretary	Dennis Cunningham

## Editorial Staff

Editor	Tom Clifton
Staff	Wendy Allen

## Membership/Subscription

Annual dues paid to The Campus Community Association, Inc., a nonprofit corporation. Membership is open to individuals, businesses and organizations.

New Member Household	\$15
Renewal	\$10
Senior/Student	\$5
Business/Organization/Institution	\$25

**Advertising Rates:** Business Card \$30, 1/6 page \$50, 1/4 page \$75, 1/2 page \$150. Please inquire for specifications and space availability.

**Editorial Policy:** Letters to the Editor should be mailed to: Advisor Editor, c/o Campus Community Association, or emailed to ccaadvisor@nagleepark.org. All letters will be printed as received to the extent possible. The editors reserve the right to edit all submissions.

---

## CCA Calendar 2003/2004

Advisor Winter 2004 Copy Deadline	February 10
CCA General Meeting 7:00 pm	January 15
Advisor Spring 2004 Copy Deadline	May 10
CCA General Meeting 7:00 pm	April 21
Advisor Summer 2004 Copy Deadline	August 10
CCA General Meeting 7:00 pm	July 21
Advisor Fall 2004 Copy Deadline	November 10
CCA General Meeting 7:00 pm	October 20

CCA Steering Committee meets the first Tuesday of every month at 6:30pm. All CCA members are welcome to attend meetings or join the committee. Any member having an item to present before the Steering Committee should contact the President to be added to the agenda. Email president@nagleepark.org

# From the Editors Desk

by Tom Clifton

In this issue, we laud our successes. The CCA and the Naglee Park community have been very active in the past year. Our successes include the Fourth of July Celebration, Bark in the Park, support for the Selma Olinder School science garden, support for the family of Christian Jimenez, and support for the Schools on Skates program.

Our success is the result of neighbors stepping forward and getting the job done. Our neighbors are great at this. They devote the time and energy needed to build our community. But, the important thing is that our neighbors don't limit themselves to our neighborhood.

On the first Saturday of every month. Naglee Park neighbors join with the Spartan Keyes neighborhood to clean the off-ramps from 280 into our neighborhoods. Now people coming off the freeway know that they are entering a neighborhood that we care about. The ramp clean-ups can always use more help, so if you are free Saturday, please consider helping out.

Naglee Park neighbors are active in the University Neighborhoods Coalition (UNC). The UNC developed the initial Revitalization Plan for the University neighborhoods and served as the Neighborhood Advisory Committee (NAC) that revised the Revitalization Plan. Currently four Naglee Park neighbors serve on the UNC board.

One neighborhood group that you may not have heard about is the United Neighborhoods of Santa Clara County (UNSCC). This group provides training for new neighborhood groups and event insurance for established groups like the CCA. It would be hard to put on Bark in the Park or our Fourth of July celebration without event insurance that UNSCC provides.

The CCA is an active participant in the UNSCC, I serve on the board and we provide neighborhood experts on what we do best (the Fourth of July, Bark in the Park, etc) at the UNSCC annual conference.

The UNSCC will be holding their annual Holiday Fundraiser on Wednesday, December 17, 2003 at 6:30 PM. For more information, go to the UNSCC website at [www.unscc.org](http://www.unscc.org).



## Pres' Says

by David Erickson  
CCA President  
President@nagleepark.org

The CCA board extends wishes for a joyous and healthy holiday season to the members of our neighborhood and community.

Thanksgiving not only opens the year-end seasonal holidays but also offers an opportunity to stop, reflect and give thanks for the great blessings that we share.

Naglee Park residents consistently respond to community-building opportunities by investing time, resources, and money. You are the strong threads in the fabric of our community. Your work this past year is impressive and we thank you for your efforts.

New Year's Eve marks the end of festivities and the beginning of a new year and new resolutions. In the coming year, please consider lending a few hours of volunteer time to any of CCA's projects, from neighborhood beautification, to welcoming new neighbors, to transportation issues and many more. It's an investment in your community and yourself that pays intangible benefits.

In October, the CCA General Meeting observed Fire Safety Month, with presentations on fire safety and public safety. Some extra materials are available; please contact me if you would like fire safety information (President@nagleepark.org or 286-1510). The Friends of William Street Park, a "grass-roots" community effort to develop near-term and long-range plans for our neighborhood park, also presented. If there's an issue or guest speaker you'd like scheduled at a general meeting, contact me with your ideas.

Have a safe and happy holiday season!



## District 3 Report

by Councilmember Cindy Chavez

The end of the year is quickly approaching, and we have many successes to look back upon and celebrate. Most recently, the downtown has been a flurry of activity with new retail and restaurants opening and community projects underway. I would like to share a few details with you and invite you to take advantage of the wonderful treasures we have in and around the downtown.

### Artist and Craftsman Supply Opening

On Thursday, November 13<sup>th</sup>, Mayor Gonzales and I joined the downtown and its artist communities to celebrate the opening of Artist and Craftsman Supply. This new downtown art store, located on the ground floor of the new Fourth Street Garage, is one of nine independent fine art supply stores along the west coast. In addition to selling art supplies, Artist and Craftsman Supply offers services such as custom matting, mounting, and framing, and will offer workshops for children and individuals interested in developing their artistic skills. Store hours will be Monday through Friday from 10:00 am to 8:00 pm and Saturday and Sunday from 10 am to 6 pm. Come explore the amazing array of arts and craft supplies to make your next creative project a success.

### Welcome Top Dog

In December, look for Top Dog to open in the Naglee Park neighborhood! Originating from Berkeley, where residents have been enjoying quality hot dogs since 1966, Top Dog has taken up residency at the northeast corner of 11<sup>th</sup> and San Carlos. If you are craving gourmet hot dogs, please stop in to welcome Top Dog to the neighborhood.

### Selma Olinder Groundbreaking

Mayor Gonzales and I joined community members and 500 students from Selma Olinder Elementary School at the November 19th groundbreaking for Selma Olinder Park. Speakers at the ceremony included Mayor Gonzales, community leaders and Christian Jimenez' mother, Angelica Jimenez.

continued on page 9



For all your home telecommunications and networking needs

**Geoff Lynch**  
101 S. 12th Street, San Jose, CA 95112  
408.294.2123 phone  
408.823.0556 cell



# County Notes

by Supervisor Blanca Alvarado

## Identity Theft

*How to prevent it and what to do if you're a victim*

Identity theft occurs when a person uses your information to acquire credit, goods, services, or medical information without your authorization.

With 3.3 million victims in the past year alone, identity theft has become the fastest growing crime in the United States.

### How to Avoid Being a Victim

The Property Crimes Unit of the County of Santa Clara Sheriff's Office recommends that you:

- Do not give out personal information unless you initiated the conversation and have a reason for sharing the information.
- Have your name removed from credit reporting agency lists to receive pre-approved credit offers or marketing offers by calling 1-888-5-OPTOUT (1-888-567-8688).
- Review all bills carefully. Follow up with creditors if bills do not arrive on time.
- Call your creditor to dispute any unauthorized charges.
- Report all lost or stolen credit cards and ask the credit bureaus to place a "Fraud Alert" in your file.
- Get a credit report from each of the three major credit-reporting agencies on a regular basis for changed addresses or fraudulent information. (See contact information below.)

continued on page 5

### The Three Credit Reporting Agencies

Equifax	Experian	TransUnion
Get a Report: 1-800-685-1111	Get a Report: 1-888-397-3742	Get a Report: 1-800-888-4213
Report Fraud: 1-800-525-6285 www.equifax.com	Report Fraud: 1-888-680-7289 www.experian.com	Report Fraud: 1-800-680-7279 www.tuc.com

### The Federal Trade Commission

#### Identity Theft Hotline

1-877-IDTHEFT (438-4338)

# Naglee Park Prepared

by Rich Eilbert & William O'Connell

Naglee Park Prepared Coordinators

It is time to resuscitate Naglee Park Prepared. For the past couple of years we have not done much to keep it alive. What is it? It is our neighborhood emergency preparedness team. At one point we had about 40 block monitors, two coordinators, and an executive committee that met regularly.

In the past several weeks 14 new block monitors have stepped up to take on the duties of helping to make their neighbors safe in case of a disaster such as a serious earthquake. And we need more monitors – at least three for each block.

A block monitor makes her/his home and family safe first by following the directions in the green manual. Then s/he checks to see that each household on her/his block has a green manual. Finally, when a disaster happens, each monitor walks the block, checking to see what help anyone may need. All monitors then report to one of the two incident command centers in Naglee Park, where they get directions for helping neighbors in need.

continued on page 9



**Kitchens,  
Baths,  
Additions,  
Custom  
Garages**

**Remodeling Naglee  
Park Since 1990!**

**(408) 376-0184**  
www.actonconstruction.com  
License #638333

# County Notes

continued from page 4

## What to Do if You're a Victim

- 1) Call your Police or Sheriff's Office immediately to file a crime report.
- 2) To prevent further harm to your credit, contact:
  - The fraud departments of the three major credit reporting agencies – Ask that a “fraud alert” be placed on your file and that no new credit be granted without your approval.
  - All creditors involved – Contact each company that manages a fraudulently accessed bank or credit card account. Close the accounts and put passwords on new accounts you open.
  - The Federal Trade Commission – The FTC will provide information to resolve financial and other problems that can result from identity theft.
- 3) Keep copies of your credit reports, the police report, correspondence, copies of affected bills, and a log of all telephone conversations.

# Top Dog

continued from page 1

When asked about the site's frequent turnover, Paul's recipe for staying success is twofold: First he believes in being a hands-on owner. In fact he will be manning the grill much of the time. Second, he is committed to making the most delicious products possible. Paul and Top Dog founder Dick Reimann continually search local vendors to find the best sausages, breads and desserts.

Paul's passion for Top Dog started early. As a child growing up in Berkeley, he patronized the original Top Dog on its opening day in 1966 and was an instant devotee of the sausages. As a high school student, Paul was hired to work at the shop by founder Dick Riemann. The relationship continued such that Dick offered Paul the opportunity to open his own Top Dogs in Berkeley and Oakland, which Paul owned and operated from 1975-1983. Following this, Paul met and married his wife, Rae, a long-time Naglee Park resident.

Top Dog Naglee Park was born as a result of two events: Jack Casbara asked Paul to be a food vendor at Bark in the Park. The hot dogs were a huge hit at the event. About the same time, Dick and Paul reconnected, and together they decided to bring Top Dog to Naglee Park. Paul talked with the Naglee Park Development Partnership who asked Paul to open the shop in the site next to the 7-11 on the corner of 11th and San Carlos streets.

Paul Wedel looks forward to serving downtown residents the best hot dogs they have ever tasted. Top Dog, located at 284-B S.11th St., is open from 10 am to 10 pm daily and can be reached at 408-298-DOGS (3647).

*We're in the Neighborhood. . .*

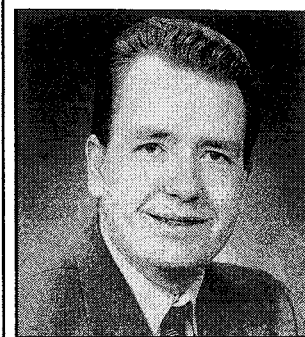
## Family Practice Medical Associates

Michael Henehan, DO	Daljeet Rai, MD
George Kent, MD	Michael Stevens, MD
Francis Lastufka MD	Frances Sun, MD
Michelle Maxey, MD	Barbara Jordan, PAC
Robert Norman, MD	Jean Foresee, FNP

**25 North 14th Street, Suite 520  
San Jose, California 95112  
Phone 995-5453**

We Provide Primary Care  
for your whole family

Infants, Children, Adults  
Women's Health and Obstetrics  
Sports Medicine



Specializing in Helping You Reach  
Your Maximum Wealth Potential™

Your Neighbor  
Eric Heckman, CFP LUTCF  
408.297.9800

## Dog/Owner Look-Alike Contest

First Prize: Steve Stein and Cosmo



*photo by Beth Martin © 2003*

Second Prize: Tim O'brien and Roco



*photo by Beth Martin © 2003*

Third Prize: Grace Robert and Rascal



*photo by Beth Martin © 2003*



# The Park

## Dog Costume Contest

First Prize: Mari Beal with Mika



*photo by Beth Martin © 2003*

Second Prize: The Jones Family Royal Court



*photo by Ralph Dias © 2003*

Third Prize: Tara the cowgirl, owned by Lucia Shiffer



*photo by Beth Martin © 2003*



# Doctors in Naglee Park

by Jack Douglas

If you yelled: "Is there a doctor in the house?" in Naglee Park during its early years, you might have found a dozen or more near at hand. From the beginning, members of the medical profession have found our neighborhood a good place to live, and many of our most distinguished architect-designed homes can be credited to them.

In a survey of physicians and surgeons listed in the city directories, I have charted the rise of doctors in Naglee Park from the year 1910 to the heyday of the neighborhood's development in 1937. Most of the early arrivals lived on the fringes - 10th, 11th, 12th, and 17th Streets. The first to settle, at 62 So. 13th Street, was Dr. Howard B. Gates and his physician wife Amelia. They commissioned the noted architect Bernard Maybeck to design their unique home in 1904. They were also one of the first to locate their Gates Sanitarium out on East Santa Clara Street at 11th. An even larger hospital, The Garden City Sanitarium, was established on the site of Roosevelt Park by Dr. Lewis Belknap in 1897.

The rise of medical facilities on East Santa Clara Street undoubtedly led to the increase of physicians in our neighborhood. San Jose Hospital, established in 1921, was the largest of these. Most doctors saw their patients in offices downtown in such buildings as the Twohy or the Porter or in the Ryland block. In the late 1920's a group of doctors, dentists and other medical professionals pooled their resources to create the Medical Dental Tower building at 6th and Santa Clara. Many of the thirty or so docs in Naglee Park had their offices in this new one-stop medical shop with its revolutionary two level parking garage.

The post-World War II era brought many changes to our town and neighborhood. The new generation of medical men opted to live in the more modern housing developments to the west. The San Jose Medical Clinic evolved on E. Santa Clara Street in the 1950's, and, according to Joan Corsiglia, her husband Victor was the only doctor to choose a Naglee Park address.

Our neighborhood is again a desirable one, and with the growing interest in the preservation of our older homes, we are again beginning to see docs in Naglee Park.

## Naglee Park doctors and where they lived

105 So. 10th: Dr. C. Habutzel, 1908-  
283 So. 10th: Dr. Alson Shufelt, 1927-1937-  
284 So. 10th: Dr. William S. Van Dalsem, 1916-1937-  
289 So. 10th: Dr. Newell Bullock, 1916-  
667 So. 10th: Dr. Viola Lantz, 1910-  
72 So. 12th: Dr. Florence Belknap, 1916-  
85 So. 12th: Dr. M. D. Baker, 1916-  
102 So. 12th: Dr. Edna Greenwood, 1916-  
145 So. 12th: Dr. Ernest Shepherd, 1937-  
298 So. 12th: Dr. Edwin Reese, 1916-  
432 So. 12th: Dr. Fred Borden, 1937-  
15 So. 13th: Dr. E. Lee Burch, 1927- (house gone)  
101 So. 13th: Dr. V. Campisi, 1937-  
135 So. 13th: Dr. Charles Richards, 1916-  
197 So. 13th: Dr. Michael Kapp, 1906-1916-1937-  
275 So. 13th: Dr. Marcus Allen, 1916-  
290 So. 13th: Dr. Paul Sanford, 1916-  
304 So. 13th: Dr. Clyde Wayland, 1916-1937-  
429 So. 13th: Dr. Helen Lee, 1927-1937-  
550 So. 13th: Dr. Herbert Cilley, 1937-  
555 So. 13th: Dr. Cletus Sullivan, 1937-  
682 So. 13th: Dr. L.S. Whittaker, 1937-  
16 So. 14th: Dr. Eugene Wislocki, 1916- (house gone)  
96 So. 14th: Dr. Caroline Avery, 1910-  
150 So. 14th: Dr. Joseph Cuneo, 1927-  
160 So. 14th: Dr. Orban McConnel, 1937-  
203 So. 14th: Dr. Leroy Berger, 1908-  
302 So. 14th: Dr. Henry Dahleen, 1927-  
343 So. 14th: Dr. Edwin Porter ?  
415 So. 14th: Dr. Helen Lee, 1916-  
456 So. 14th: Dr. Samuel Van Dalsen, 1916-  
585 So. 14th: Dr. Dorothea Lee, 1927-  
73 So. 15th: Dr. Wallace Parkman, 1916-  
201 So. 15th: Dr. Karl Pelkam, 1927-  
225 So. 15th: Dr. Pierce Barrette, 1937-  
298 So. 15th: Dr. Edward Holbrook, 1916-  
601 So. 15th: Dr. Merlin Maynard, 1927-  
680 So. 15th: Dr. Leslie Magoon, 1937-  
199 So. 16th: Dr. Philip Wise, 1927-  
228 So. 16th: Dr. Deforest Tiffany, 1927-  
300 So. 16th: Dr. Fred Bangs, 1916-  
485 So. 16th: Dr. Mark Hopkins, 1927-  
575 So. 16th: Dr. C. Kelly Canelo, 1927-  
625 So. 16th: Dr. Thomas Moore, 1927-  
70 So. 17th: Dr. Edward Newell, 1916-  
77 So. 17th: Dr. Henry Hoag, 1927-  
82 So. 17th: Dr. I. Marshall, 1937-  
99 So. 17th: Dr. Cletus Sullivan, 1927-1937-  
135 So. 17th: Dr. Hanna Goodbridge, 1910-  
173 So. 17th: Dr. Charles Moore, 1927-  
300 So. 17th: Dr. Fred Banks, 1916-  
686 Margaret: Dr. George Barry, 1927-



**INTERO.**  
REAL ESTATE SERVICES



**Pete Smith**  
Real Estate Professional

1567 Meridian Ave  
San Jose, CA 95125

Me@PetesWeb.com  
www.PetesWeb.com

Fax 408-979-5901  
Pager 408-553-5152

**408-979-5445**



## District 3 Report

continued from page 3

Residents and I have worked diligently over the past two years to put together funding for this park that otherwise would have been constructed in phases over a period of several years. Construction fencing will go up in December and grading will occur in January.

### Downtown Ice

Families, children's groups and visitors from all over skate under the sun or stars in the heart of downtown at Downtown Ice. The South Bay's largest seasonal outdoor skating rink, produced by the San Jose Downtown Association, is an easy stroll from San Jose's traditionally popular Christmas in the Park and Winter Wonderland festivities. Make a day of exploring and skating downtown this holiday season.

Downtown Ice, presented by Knight Ridder, is at Market Street and Viola Avenue, one block south of the convention center.

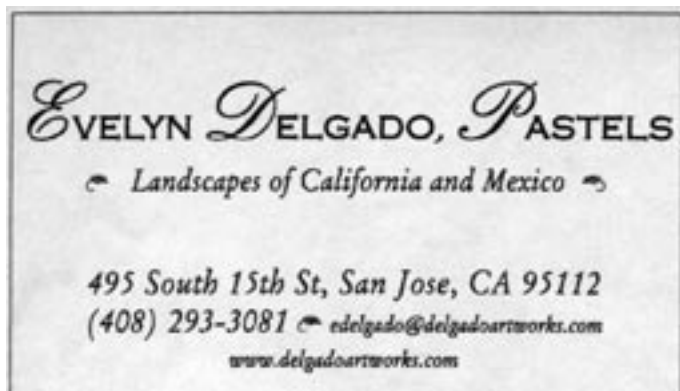
The rink will be open daily, including holidays from Nov. 21, 2003 to Jan. 19, 2004. The 90-minute sessions begin every two hours and are limited to 200 people.

Admission is \$7 plus \$3 skate rental Monday-Thursday; \$8 plus \$4 skate rental Friday-Sunday and holidays. Children 8 years and younger get free skate rental. High school students under 18 need parental consent. The rink phone number is (408) 287-6423.

### Schools on Skates program

You can give a group of children the opportunity to experience the fun – and possibly create a life-long memory – as a charter sponsor of the Schools on Skates program at Downtown Ice. As a sponsor, you may select a specific school to receive the skate

continued on page 11



## Naglee Park Prepared


continued from page 4

If you would like more info on the duties of block monitors, call William at 286-9341 or email him at wocdoc@earthlink.net.

Meanwhile, some things you can do to make your family safer: put up house numbers which are large and dark (or light, depending on the color of your house) so emergency vehicles do not have to hunt for them. Too many homes in Naglee Park do not have numbers easily visible. Next, prepare an emergency kit (see the green manual). Also, talk to folks on your block, organize a Neighborhood Watch meeting. Finally, consider taking a first aid/CPR class. (We are organizing such a class. Let us know if you want to be in it.)

After a planning meeting, scheduled in November, we will announce some training sessions for block monitors.

Most of the victims of disasters die because they panic. Being prepared lessens the amount of panic. When our neighborhood is fully prepared, we will be part of the solution instead of part of the problem.




**When Deadlines are short, you'll long for our Services...**

- Color & BW Copies
- Oversize Copying
- Graphic Design
- Newsletters
- Brochures
- Posters & Banners
- Manuals & Reports
- PC & Mac Rentals
- Lamination & Mounting
- Binding & Padding
- Business Cards
- Letterheads
- Passport Photos
- Fax & FedEx Services

**10% OFF**  
for all Downtown Residents

Instore services only.  
Bring in ad for discount.  
Not good with any other offers.

**Downtown San Jose ♦ 408.286.0409**  
**Across from new MLK Library**



**FREE PARKING, PICK-UP & DELIVERY**  
140 E. San Fernando Street ♦ San Jose, CA 95112  
www.CopyClubSanJose.com

## Fischler & Fischler Properties

Your full service neighborhood brokerage

We handle the buying, selling,  
and financing of real estate!

John Fischler  
Broker/Owner

Office: 292 1101  
Home: 947 0974

## Ruie (Dee) Luescher

*Certified Public Accountants*

(408) 947-8668      672 South 14th St.  
FAX (408) 293-4258      San Jose, CA 95112

email: luescher@aol.com

Income Tax Planning and Preparation

## Yoga in Union



42 A South First Street  
'El Paseo Court'  
www.yogainunion.com  
408 299 0707

- Healthful & nourishing environment
- Emphasis on complete & total well-being
- Special Holiday gift certificates available
- Small class sizes
- Beginners' series starting in January
- Easy Basic Yoga on Monday nights
- No membership fees
- Close to Bella Mia, with parking validation
- Class schedule & announcements on website

*The Cornerstone of Our Business is  
Vintage Home Sales*



*Meg Masterson & Karen Smith*

Representing Buyers & Sellers in  
Naglee Park, Downtown,  
Shasta Hanchett Park,  
Rose Garden & Willow Glen  
**Call Meg & Karen (408) 491-1661**

**COLDWELL BANKER**

*Helen's Heirloom Houses*  
pen & ink and watertcolor  
drawings of your home

Helen Magnus

408-297-3828  
hnmagnus@earthlink.net

Sam's  
**DOWNTOWN  
FEED & PET  
Supply**

*Old  
Style  
Service*



QUALITY PET GOODS  
AT COMPETITIVE PRICES  
ALL MAJOR BRANDS

MON - FRI  
8 - 7  
SAT  
8 - 5

■ PET FOODS      ■ HAY & GRAIN  
■ SUNDRIES      ■ BEDDING  
■ BIRD SEED      ■ SUPPLEMENTS  
■ CAGES & KENNELS      ■ FEEDING EQUIPMENT

LOOK FOR THE HORSE!

(408) **287-9090**

www.samsdowntownfeed.com

759 W. SAN CARLOS

BETWEEN BIRD & MERIDIAN 2 BLOCKS NORTH OF HWY 280

## Bark in the Park

continued from page 1

the Schools on Skates program at Downtown Ice, with our benefactor being Horace Mann Elementary, our neighborhood school.

Bark in the Park is about building community and creating opportunities. On behalf of the Bark Committee, I want to thank our many volunteers, our vendors, our sponsors, and all of our neighbors for helping us put on such a successful event. We appreciate all of you very much.

Personally, I want to thank the Bark in the Park 2003 Committee and all the area chairs. You are the best. You are the reason that Bark runs so smoothly and seamlessly. I appreciate the many, many hours you put in to make this a great event. Thank you.

In a couple months, we start the early planning for Bark in the Park 2004. Bark 2004 will be held on September 18, 2004 from 10am to 5pm. If you would like to help us organize Bark 2004 we would love for you to join us. You can reach me at 408-292-4709 or email at barkinpark@naglepark.org.

## District 3 Report

continued from page 9

session, or one will be selected for you. A single \$2,000 sponsorship enables up to 200 children to a 90-minute skating experience plus skate rental for all.

For more information or to make a donation, call (408) 279-1775.

### Downtown Ice Hours

#### Normal hours:

Monday-Wednesday: 6 & 8 p.m.

Thursday: 4, 6 & 8 p.m.

Friday: 4, 6, 8 & 10 p.m.

Saturday: 10 a.m., noon, 2, 4, 6, 8 & 10 p.m.

Sunday: 10 a.m., noon, 2, 4, 6 & 8 p.m.

#### Holiday hours:

Nov. 27: 2, 4, 6 & 8 p.m.

Nov. 28: 10 a.m., noon, 2, 4, 6, 8 & 10 p.m.

Dec. 22-24: 10 a.m., noon, 2, 4, 6, 8 & 10 p.m.

Dec. 25: 2, 4, 6, 8 & 10 p.m.

Dec. 31: 10 a.m., noon, 2, 4 & 6 p.m.

Jan. 1: 2, 4, 6, 8 & 10 p.m.

Jan. 2: 10 a.m., noon, 2, 4, 6, 8 & 10 p.m.

Jan. 19: 10 a.m., noon, 2, 4, 6 & 8 p.m.

---

## HAVE YOU RENEWED YOUR CCA MEMBERSHIP?

Many CCA sponsored activities take place during the year.

Your dues help CCA sponsor picnics, newsletters, and many community education and beautification projects for our neighborhood.

DUES: New Members-\$15, Renewal-\$10, Senior/Student-\$5, Business Org-\$25, All Dues are tax-deductible. We'd be happy to accept an additional tax-deductible donation for our General Fund or one of the following ongoing activities: Beautification, Medians, Elm Trees & Tree Plantings, Graffiti Clean-Up, ECCO, Naglee Park Prepared, Bark in the Park, or Welcoming Committee, Gateways/Traffic Calming — just specify which one below!

Name \_\_\_\_\_ Phone \_\_\_\_\_ Email \_\_\_\_\_  
Address \_\_\_\_\_ I Will Help On \_\_\_\_\_  
Membership Dues \$ \_\_\_\_\_ \$ \_\_\_\_\_ Donation for \_\_\_\_\_

Please make checks payable to CCA. and mail to: CCA Treasurer, P.O. Box 90038, San Jose, CA 95109-3038.

The Campus Community Association, Inc. is a non-profit corporation organized to promote neighborhood spirit and improved conditions through education and community projects.

## Numbers To Remember

Emergency .....911  
Police Non Emergency ..... 311  
Neighborhood Action Center ..... 408-277-5722  
Report Crimes after the fact.....408-277-5300  
Neighborhood Preservation .....408-277-5680  
Code Enforcement .....408-277-4528  
Graffiti Hotline.....408-277-2758  
Board and Care Issues.....408-277-4069  
Shopping Cart Pickup ..... 408-277-4000  
Abandoned Cars.....408-277-5305  
Parking Permits.....408-277-4304  
Crime Prevention/Nbrd. Watch.....408-277-4133  
Traffic Operations/Street Lights/  
Signal Repair.....408-277-5515  
Signs and Marking .....408-277-5341

Campus Community Association  
P.O. Box 90038  
San Jose, CA 95109-3038  
ccainfo@naglepark.org  
www.naglepark.org  
408-292-4709

SJUSD Board Trustee, District 1  
Jorge Gonzales ..... 408-535-6000  
855 Lenzen Drive San Jose, CA 95126-2736

City Councilmember, District 3  
Cindy Chavez.....408-277-5231  
City Hall, Room 600  
801 North First Street San Jose, CA 95110  
cindy.chavez@ci.sj.ca.us  
www.ci.san-jose.ca.us/council/dist3/default.asp

County Supervisor, District 2  
Blanca Alvarado.....408-299-2323  
County Government Center, East Wing  
70 West Hedding Street San Jose, CA 95110  
blanca.alvarado@bos.co.santa-clara.ca.us  
Blancaalvarado.org

Congresswoman, District 16  
Zoe Lofgren ..... 408-271-8700  
635 N. First St. #B San Jose, CA 95112  
zoe@lofgren.house.gov

Assemblymember, District 23  
Manny Diaz.....408-277-1220  
100 Paseo de San Antonio #300 San Jose, CA 95113  
assemblymember.diaz@assembly.ca.gov

---

## THE ADVISOR

Campus Community Association  
P.O. Box 90038  
San Jose, CA 95109-3038

Standard  
Presort  
U.S. Postage  
PAID  
San Jose, Ca  
Permit#5389

***In this Issue***  
***Top Dog***  
***Bark Wrap up***  
***Identity Theft***  
***Nagle Park Prepared***